

ENCABULADO

Choro

Zé Menezes e Luiz Bittencourt

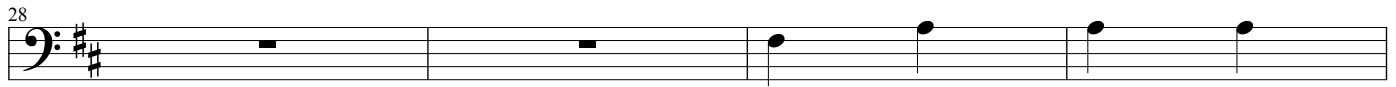
Arranjo: Zé Menezes

Big Band

Trombone

The musical score for the Trombone part is written in bass clef with a key signature of one flat (B-flat) and a time signature of 2/4. The piece is in common time (C). The score consists of seven staves of music. The first staff begins with a dynamic marking of *mf*. The second staff starts at measure 4. The third staff starts at measure 8 and includes a repeat sign with a first ending bracket. The fourth staff starts at measure 12. The fifth staff starts at measure 16. The sixth staff starts at measure 21 and ends with a double bar line and a fermata. The seventh staff starts at measure 24 and includes first and second endings, followed by a section labeled 'B' in a box. The music features various rhythmic patterns, including eighth and sixteenth notes, and rests.

ENCABULADO



Ao S 2x e Coda \emptyset

